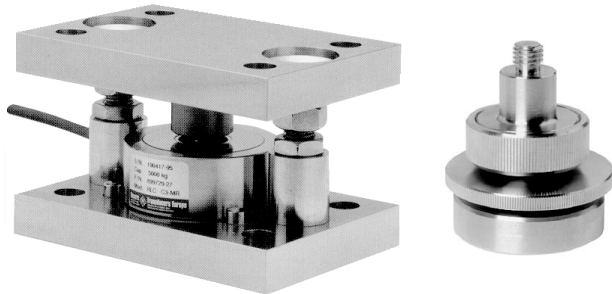


## RLC Self Aligning Accessories



### FEATURES

- Capacities: 0.25 - 10t
- Hardened components at all load bearing surfaces
- Rocker pin load introduction
- Stainless steel construction
- Built-in horizontal movement control and lift-off protection
- Load cell (re)placement after installation of the mount

### DESCRIPTION

The RLC self-aligning silo mount, combined with the RLC load cell family, provides weighing assemblies suitable for process control, batch weighing, silo/hoppers and belt scale applications.

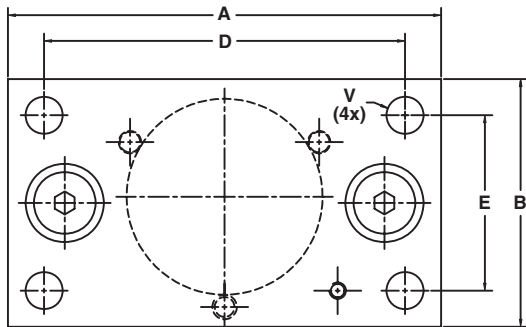
The RLC self-aligning foot assembly is an ideal solution for medium capacity platform scales and belt scale applications.

The RLC mount and foot are based on a rocker pin design, combining excellent load introduction to the transducer with an overall low profile. Hardened stainless steel components are used at all bearing surfaces. The fully stainless steel construction guarantees long term reliability, even in the most harsh of environments.

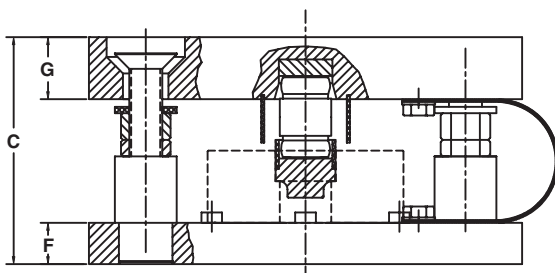
### APPLICATIONS

- Process control
- Batch weighing
- Silo/hopper weighing
- Belt scale weighing

### OUTLINE DIMENSIONS in millimeters



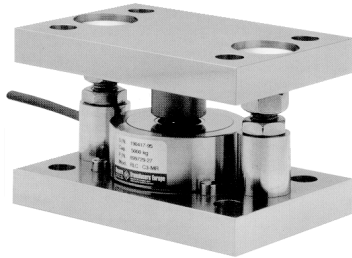
Capacity	0.5t, 1t	2t, 3.5t, 5t	10t
A	150	160	210
B	100	110	120
C	75	100	110
D	120	120	175
E	70	70	85
F	15	20	20
G	20	20	30
V	Ø13	Ø16	Ø18



**ACCESSORIES**

**Self Aligning Mount**

The stainless steel RLC mount tolerates controlled movement in all directions. The silo or hopper is held captive, eliminating the need, unless major load movement is anticipated, for additional check rods. The unique design allows the load cell to be placed or replaced after installation of the mount.



**Height Adjustable Foot**

This stainless steel foot, which has 5mm of height adjustment, provides excellent load introduction to the load cell. The foot allows flexibility in platform design without compromising overall system performance.



**Non Adjustable Foot**

The non-adjustable, stainless steel foot carries the same specifications as the height adjustable version, while providing an even lower profile.



**Further information:**

<b>Self Aligning Mount</b>	<b>0.25 - 1t</b>	<b>2 - 5t</b>	<b>10t</b>
<b>Height, mount assembly + RLC</b>	75	100	110
<b>Outline drawing</b>	899043-00	899045-00	499094-10
<b>Mount assembly guideline</b>	AG 05/7-100/01	AG 05/7-100/01	-
<b>Self Aligning Feet</b>	<b>0.25 - 1t</b>	<b>2 - 5t</b>	<b>10t</b>
<b>Outline drawing non-adjustable foot</b>	899041-00	899042-00	-
<b>Height of non-adjustable foot + RLC</b>	50	85.2	-
<b>Outline drawing adjustable foot</b>	499083-00	499084-00	499093-00
<b>Height of adjustable foot + RLC</b>	60+5	92.6+5	120.2+5

**VISHAY TRANSDUCERS (VT) SALES OFFICES**

**VT Americas**  
 City of Industry, CA  
 PH: +1-626-858-8899  
 FAX: +1-626-332-3418  
 vt.us@vishaymg.com

**VT Netherlands**  
 Breda  
 PH: +31-76-548-0700  
 FAX: +31-76-541-2854  
 vt.nl@vishaymg.com

**VMG UK**  
 Basingstoke  
 PH: +44-125-646-2131  
 FAX: +44-125-647-1441  
 vt.uk@vishaymg.com

**VMG Israel**  
 Netanya  
 PH: +972-9-863-8888  
 FAX: +972-9-863-8800  
 vt.il@vishaymg.com

**VMG Germany**  
 Heilbronn  
 PH: +49-7131-3901-260  
 FAX: +49-7131-3901-2666  
 vt.de@vishaymg.com

**VT China**  
 Tianjin  
 PH: +86-22-2835-3503  
 FAX: +86-22-2835-7261  
 vt.prc@vishaymg.com

**VMG France**  
 Chartres  
 PH: +33-2-37-33-31-20  
 FAX: +33-2-37-33-31-29  
 vt.fr@vishaymg.com

**VT Taiwan\***  
 Taipei  
 PH: +886-2-2696-0168  
 FAX: +886-2-2696-4965  
 vt.roc@vishaymg.com  
 \*Asia except China